

STEEL-FAB, INC.

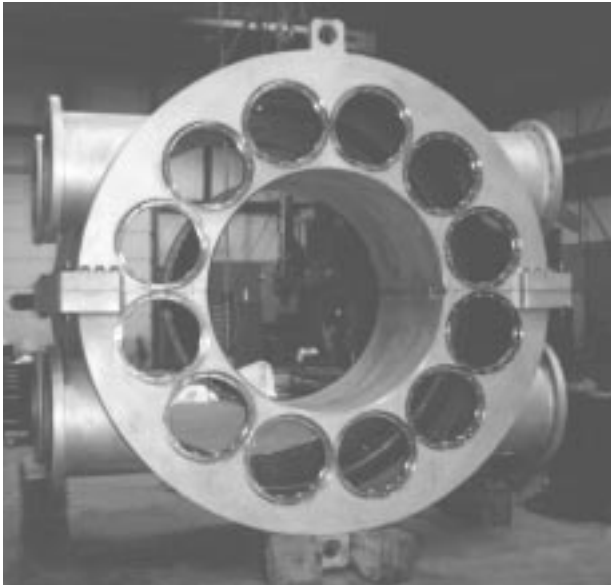
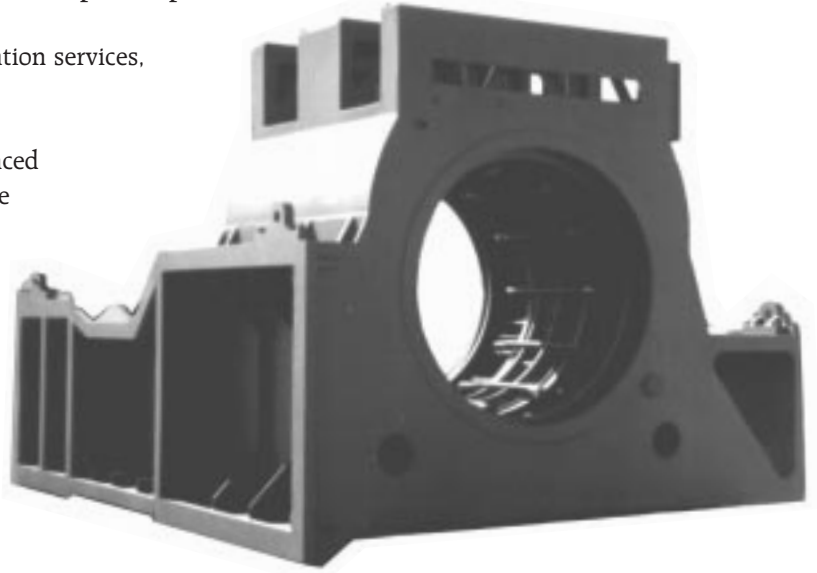


COMPANY PROFILE

Steel-Fab has furnished steel fabrications to industry nationwide since 1967. Recognized as an area leader in heavy plate fabrication, Steel-Fab has developed a manufacturing continuum that meets demanding quality requirements at more than competitive prices.

Our fully equipped shop provides complete fabrication services, making project coordination more cost-effective.

The Steel-Fab team of highly trained and experienced individuals take pride in the ability to manufacture custom weldments. At Steel-Fab we believe the human resource is our most valuable resource and compliments a job well done.



WELDING

Steel-Fab's welding utilizes a variety of processes, including the ability to Gas Tungsten Arc Weld, Fluxcore Arc Weld, Shielded Metal Arc, and Submerged Arc.

Welding procedures and operators are qualified in accordance with AWS, ASME, and Military Standards 278 and 248.

We work with various materials including carbon steel, stainless steel, chrome-moly, and other alloys.



The fabrication projects pictured on these pages demonstrate Steel-Fab's ability to handle a wide range of complex projects.





CNC PLATE
PROCESSING

METAL WORKING

WELDING

NON-DESTRUCTIVE
TESTING

FINISHING

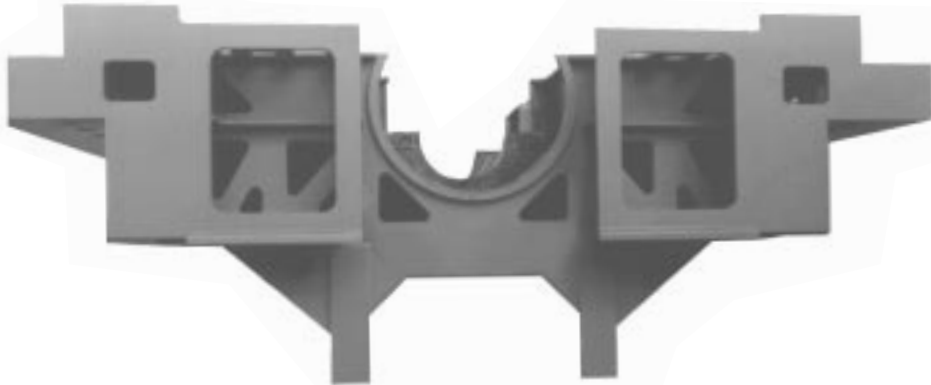


QUALITY CONTROL

To ensure that the Steel-Fab Quality Control standards are unsurpassed, we have instituted a QC check and balance system that continually monitors each operation throughout the manufacturing process.

Steel-Fab has the ability to perform a variety of non-destructive testing methods in accordance with AWS, ASME Section V, and Military Standard 271.

VT Visual
MT Magnetic Particle
LP Liquid Penetrant
UT Ultrasonic



PRECISION FABRICATION

In all or part, Steel-Fab's heavy plate fabrications satisfy the most stringent demands, and are widely known throughout the industry for precision and quality.



Our material handling capabilities include a 40-ton overhead crane.

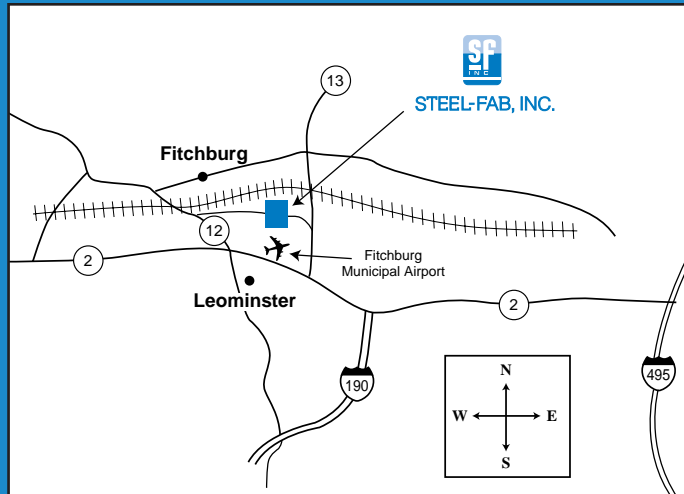




The Steel-Fab facility is located at 430 Crawford Street in Fitchburg, Massachusetts.



The American Society of
Mechanical Engineers



Steel-Fab maintains more than 30,000 square feet of manufacturing space in North Central Massachusetts. With full complement of metalworking and processing equipment Steel-Fab can efficiently handle all of your fabricating needs.



STEEL-FAB, INC.

430 Crawford Street, P.O. Box 2145, Fitchburg, MA 01420-8645
Phone 978-345-1112 • Fax 978-343-7925